

AIRBAG WARNING LAMP ILLUMINATED; SHORTED WIRE IN FRONT SEAT HARNESS**TECHNICAL SERVICE BULLETIN**

Reference Number(s): SI B65 01 13, Date of Issue: January, 2013

BMW: F07; F10; Produced from May 31, 2009

GROUP: Audio, Navigation, Monitors, Alarms, SRS

SUBJECT

Airbag Warning Lamp Illuminated; Shorted Wire in Front Seat Harness

SITUATION

The airbag warning lamp (AWL) is illuminated. One or more of the following faults will be stored in the ACSM (Advanced Crash Safety Module) as displayed in ISTA:

930979: Side airbag, driver: short-circuit to negative

930955: CAK, driver: short-circuit to earth

930925: Seat belt tensioner, driver: short-circuit to earth

9309CA: Seat belt lock contact, front passenger: communication fault

93095B: Active head restraint, front passenger: short-circuit to negative

93095F: Active head restraint, front passenger: line coupled

93093A: Seat belt tensioner, front passenger: resistance too great

93095E: Active head restraint, front passenger: resistance too great

9309CA: Seat belt lock contact, front passenger: break in circuit

930982: Side airbag, front passenger: resistance too great

CAUSE

A short in the wiring harness in the driver's or/and passenger's seat

PROCEDURE

Replacing the ACSM module will not correct these faults.

Troubleshoot the faults mentioned above by completing the linked test plan in ISTA. Follow the guidelines in the attachment for reported areas where the wiring may be shorted.

Troubleshooting Hints

- Faults that are set for a "Short-circuit wire to earth (negative)": check the wiring between the ACSM module and the airbag component for shorts to ground. If the fault is not currently present, move the seat position while monitoring the wiring.
- Faults that are set for "Resistance too great": check the wiring and plug connections between the ACSM module and the airbag component for high resistance. If the fault is not currently present, move the seat position while monitoring the wiring.

If you find an area where the wiring is shorted or open and it is not mentioned in the attachment, provide feedback by creating a PuMA Info Only case with clear digital pictures for the different locations, with the subject line "Seat harness shorted."

This information will be added to the next update to this Service Information bulletin.

WARRANTY INFORMATION

Not applicable.


ATTACHMENTS

B65 01 13 Attachment


January 2013

INFORMATION

The following are pictures of areas in the driver's or passenger's seat harness where the wiring is damaged. Repair and reposition the harness to prevent the short from happening again.



1. The photo shows the seat harness damaged by rubbing against the electrical motor when the seat is moving.

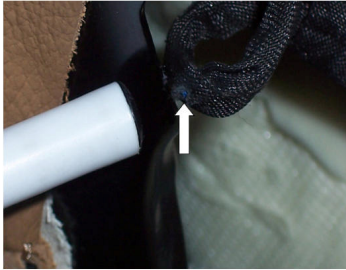


Repair the wiring by referring to ISTA Repair Instruction "61 00 ... Notes on handling wiring harnesses and cables."

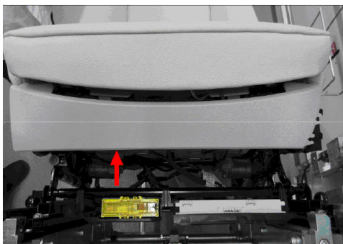


2. The airbag warning light is on for the active headrest short circuit to ground.

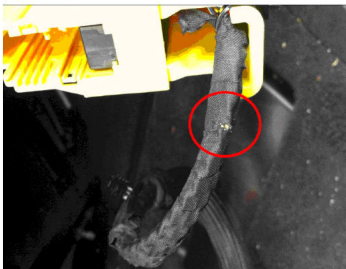
The photo shows a shorted wire at the top back frame corner.



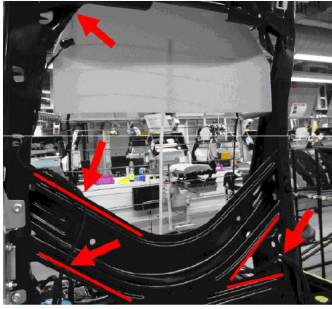
Repair the wire and re-route the harness.



3. The red arrow shows the front seat area for a damaged seat harness.

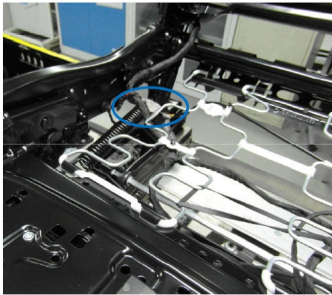


4. Check the main harness for any damage before disconnecting it from the seat. Make sure there is no object under the seat causing the damage.



5. Inspect the seatback frame for sharp edges which may damage the harness.

You can use felt strip P/N 54 13 7 181 349 to protect the harness from rubbing against sharp edges.



In the seat bottom frame look for the harness rubbing against the spring, electric motor, sharp edges, hinges, etc...

Use self-adhesive felt strip P/N 52 20 7 276 398 to protect the harness from rubbing at these locations.